

SOLSTICE LANDSCAPING

CREATE A MEANINGFUL SPACE

Landscape Architecture by DHM Design



Landscape Design by Solstice Landscaping

Connecting lifestyle to environment is the soul of an outdoor space. Design, functionality, and seamless transition from home to land are the cornerstones in achieving that successful connection. With 21 years of experience, Geoff Hammond, owner of Solstice Landscaping, a full-service landscape design company, has created award-winning landscapes across the region. The firm's aim is to produce lasting outdoor living areas and landscapes that connect clients to their land. "Every property is unique and most clients have certain ideas they'd like to have created by their landscape contractor. That's where we come in—our ultimate goal is to bridge the two and create a landscape that is functional, fun, and unique."

The adage "build it and they will come" proves true when crafting outdoor living spaces for family, friends, and neighbors to enjoy. "Creating well-defined, purposeful spaces in outdoor areas invites homeowners to move their life beyond their homes' walls," explains Errol Schumann, lead designer and operations manager for Solstice Landscaping. "Generally, we start outdoor living design with hardscape—delineating the space, mindful of scale and intention. We ask clients, 'Is this space for entertaining? For cooking? For many or a few?' Then, we listen; that's perhaps the most important thing we do. From there, we integrate lighting elements, fireplaces or fire pits to center the action, and balance hardscape with softscape materials, so spaces can add year-round value to the view from within the home."

The design process should always culminate in a detailed site or landscape plan for all the outdoor components, including all hard and soft materials, plant sizes and quantities, irrigation specifications, and additional landscape notes," says Geoff. "Good installation starts with good design. Time and energy invested in a detailed site plan early on is the key to success, saving money and headaches down the line."

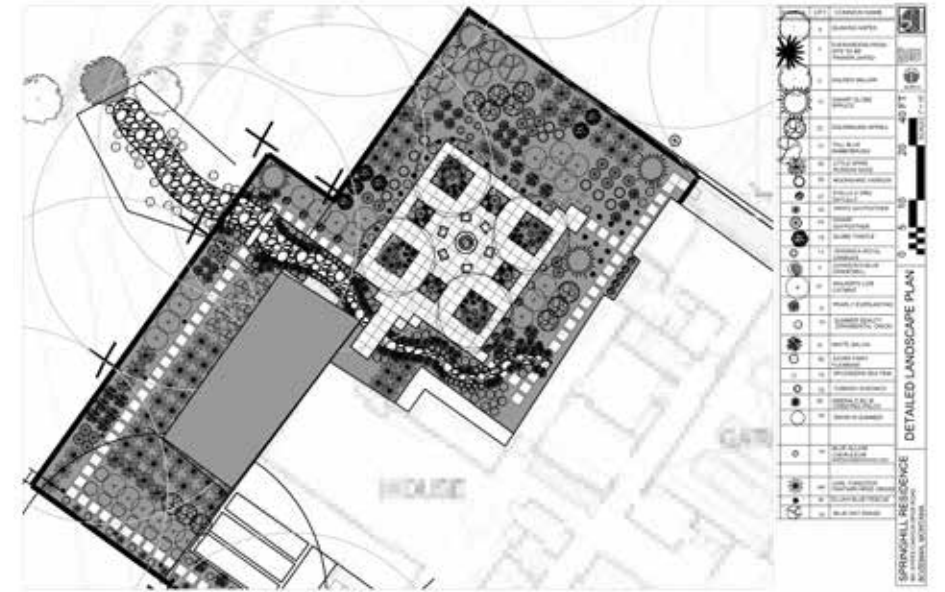
Maximizing the natural setting is also at the core of what Solstice Landscaping achieves. They work in a variety of settings, from high-density, in-town homes, to ranches surrounded by acres of swaying grass, to rugged high-mountain retreats. Each place brings specific landscape considerations. "The natural elements of the property lend themselves to certain design approaches. A ranch home will likely have native plantings, rustic elements and natural lines throughout so as to mimic its surroundings. A mountain home with a steep grade will benefit from terracing with stonework, plantings, and native seeding to blend aesthetic with structural elements into the landscaping. An urban setting tends to focus on making the most of limited space, while nodding toward the specific style of the home's architecture, whether contemporary or craftsman" explains Geoff.

"GOOD INSTALLATION STARTS WITH GOOD DESIGN. TIME AND ENERGY INVESTED IN A DETAILED SITE PLAN EARLY ON IS THE KEY TO SUCCESS, SAVING MONEY AND HEADACHES DOWN THE LINE."

—Geoff Hammond, Owner, Solstice Landscaping



Landscape Design by Solstice Landscaping



"WE WANT TO SEE THE LANDSCAPES WE CREATE ACHIEVE LONG-TERM SUCCESS, SO WHEN A JOB'S COMPLETED IT'S COMMON FOR US TO PROVIDE THE OWNER WITH A KNOWLEDGE OF 'BEST PRACTICES' FOR SUCCESSFUL ON-GOING UPKEEP. ADDITIONALLY, WE HAVE A MAINTENANCE DIVISION THAT CAN CARE FOR THE LANDSCAPE INTO THE FUTURE."

-Geoff Hammond, Owner, Solstice Landscaping



Landscape Architecture by DHM Design

Each setting also comes with the challenges of our region—short growing seasons, extreme climate, and foraging animals. The 70+ years of combined landscape experience on the Solstice team means that they are able to meet these challenges with a full toolkit of knowledge for everything from climate-hardy plants to water-wise irrigation practices for our region.

Geoff and Errol say that no extraordinary landscape design is a solo effort. They consider Solstice a part of a team that starts with the client and extends through a range of talented professionals and their team of skilled installers. "We work with incredible residential architects and builders, as well as the best landscape architects in the region. Taking cues from their design is key in creating transition from indoor spaces to outside living," says Errol while describing a recent project, where the kitchen opened to the main outdoor living area. Solstice was able to match the style and scale chosen for the home's indoor kitchen tiles to the concrete pavers they placed outside. The thoughtful material coordination creates the sense of a single unified space that spills from inside to the outdoors. "The collaboration isn't just done on paper," Errol adds. "It evolves in the field. As projects take shape, new challenges or opportunities emerge for the landscape. We work as a team with the homeowner, our suppliers, and building professionals to find collaborative solutions."

Solstice Landscaping's ultimate goal is to have a positive lasting impact and to enrich a homeowner's life long after the day when the Solstice team packs up their tools. As Geoff says, "We want to see the landscapes we create achieve long-term success. So when a job's completed it's common for us to provide the owner with a knowledge of 'best practices' for successful on-going upkeep. Additionally, we have a maintenance division that can care for the landscape into the future." ■



Landscape Design by Solstice Landscaping